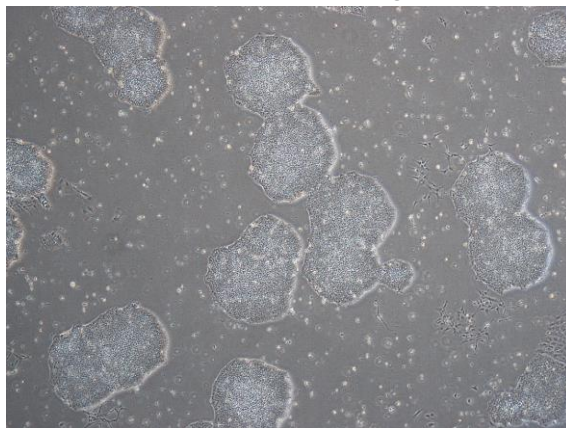


## 【 CiRA-j-1045 】 Morphology of iPSC colonies

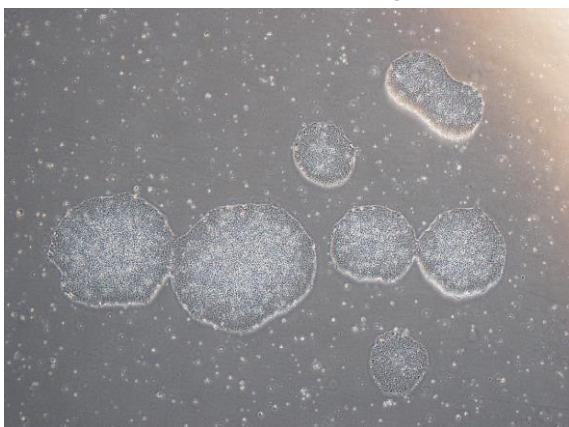
CiRA-j-1045-A: passage-2



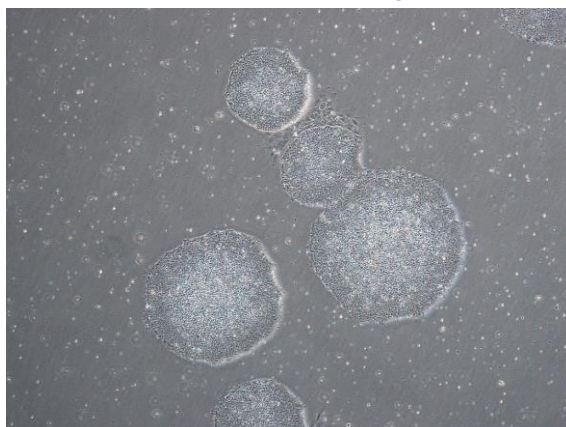
CiRA-j-1045-B: passage-3



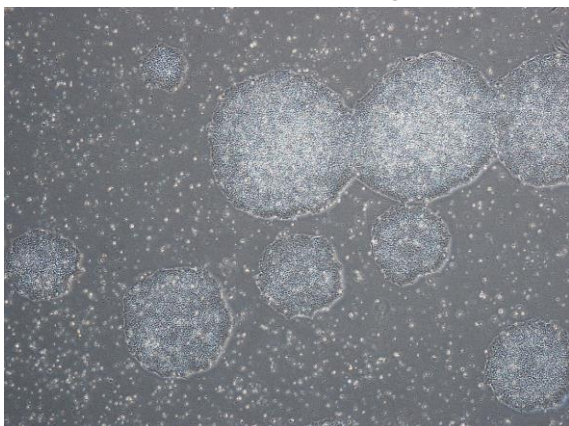
CiRA-j-1045-C: passage-3



CiRA-j-1045-D: passage-3



CiRA-j-1045-E: passage-3



CiRA-j-1045-F: passage-2



( All images were captured at 4x magnification )